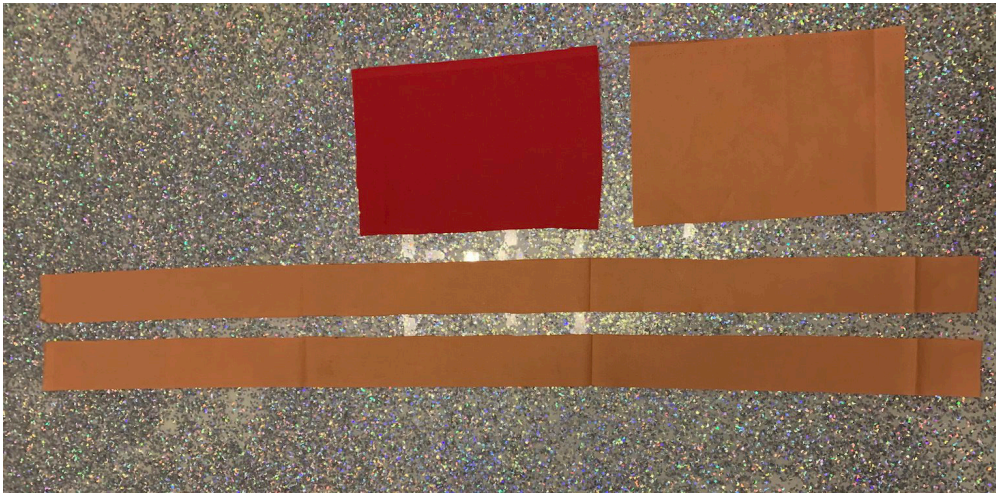


Non-medical fabric face mask tutorial

by Sophie Margot
@sophiemargotart





You will need four pieces of fabric:
2 - 6.5" x 9.5"
2 - 2" x 36"

1



For the face mask part,
use two different colors or
patterns so that it is easy to
tell the difference between the
inside and outside.

Put the right sides of the face
mask pieces together, sew
along the short sides with a
1/4" hem.





- 2** Turn right sides out, press seams. Pressing isn't necessary if you don't have an iron.



- 3** Take the two long tie pieces, use iron to press folds along the entire length.

Fold both edges to center, then again in half.

This can be done by pinning, if you don't have an iron.

Alternatively, you can use 1/2" bias tape if you have it available.



- 4** Line up center of ties with center of masks on long side, pin together with the mask sandwiched between folded tie.



- 5** Fold and tuck three pleats on face mask. Make sure that all of the pleats are folded in the same direction.

6



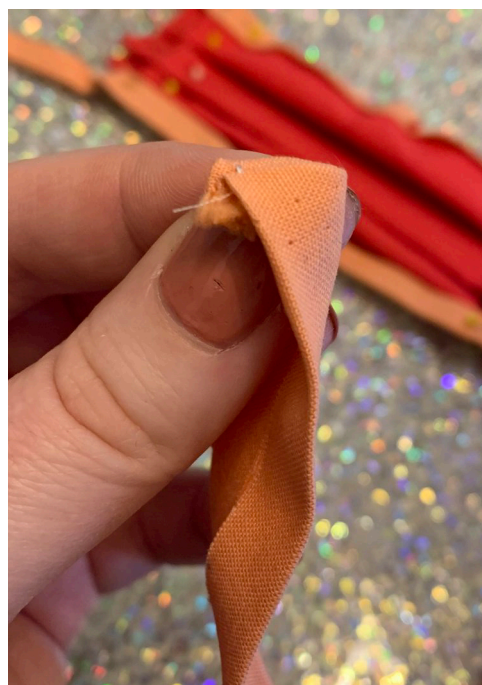
Finishing the ends of the ties.



Unfold tie so that the right sides are touching.



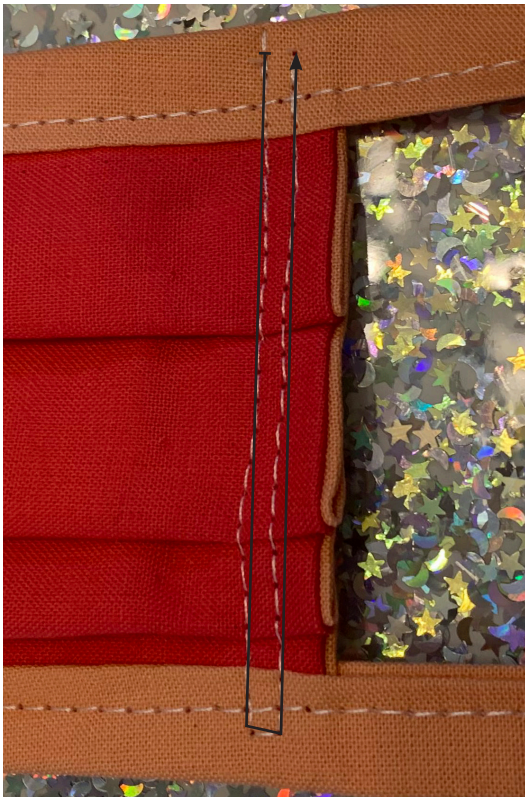
Sew back and forth a few times over the end.



Turn right side out, and push out corner of the end.



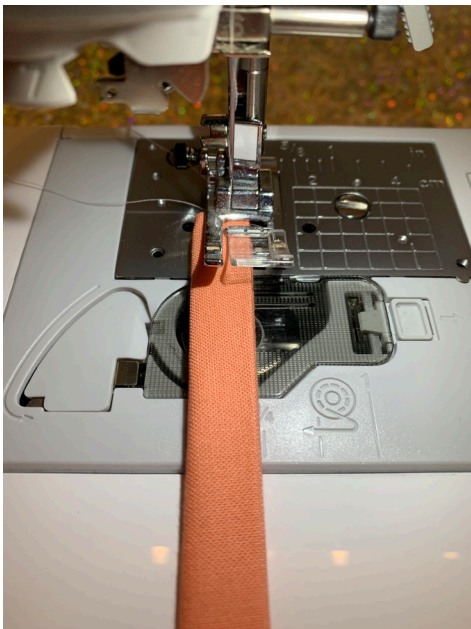
Repeat for each of the four ends.



7

Sew the sides of the mask with 1/2" hem, then sew back up the side with 1/4" hem.

When you get to the end of the first line, pick up the foot, turn the mask, make one stitch, then turn it again to go back up to where you started.



8

Last step is to sew along the entire length of the ties, which attaches the mask completely to the ties.

Sew with the open side of the ties to the right, with a 1/4" hem.

Sew the entire length, on both ties.

Trim all of the loose threads.

It should look something like this!

